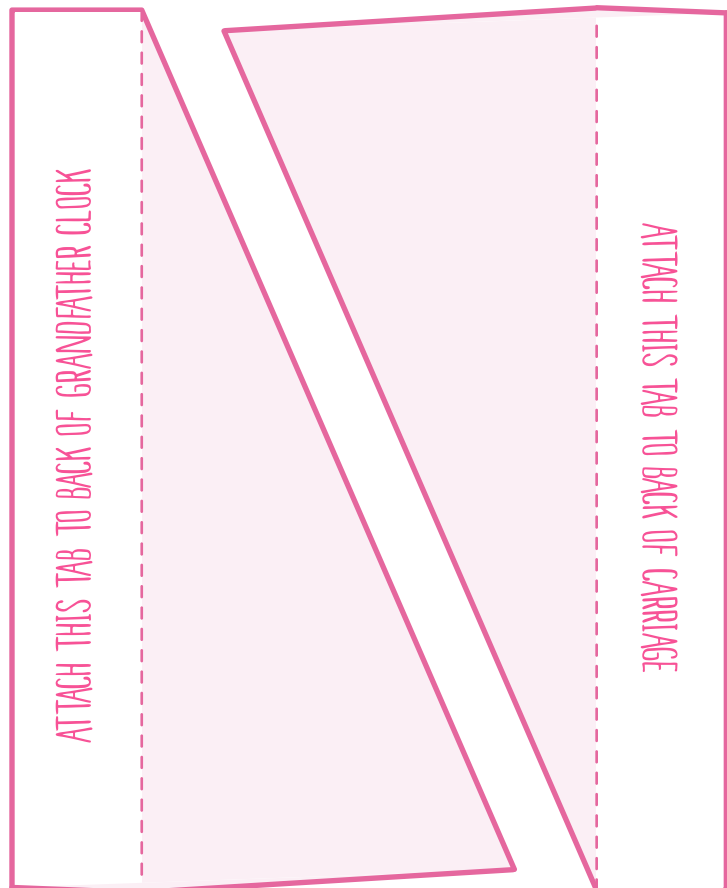
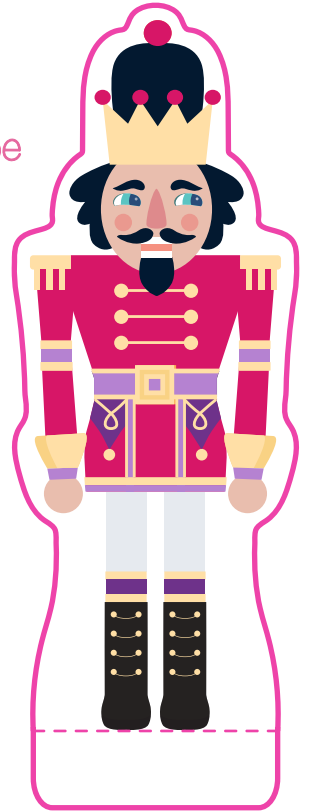
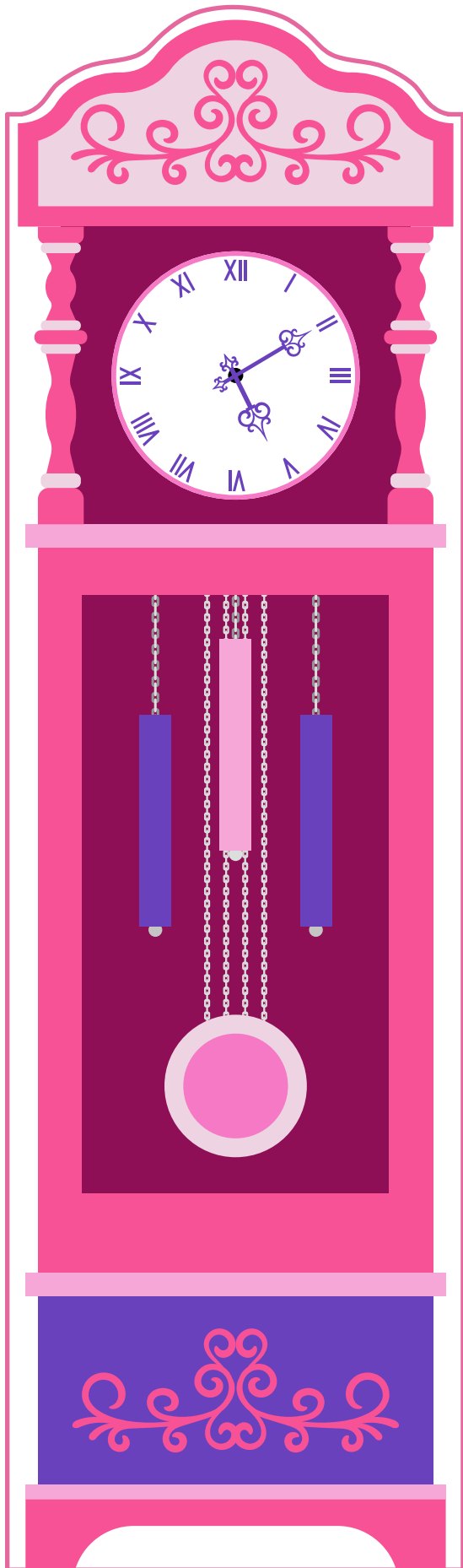


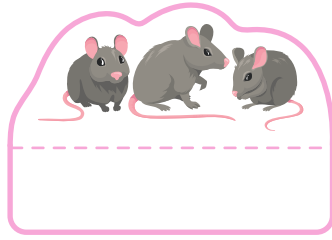


INSTRUCTIONS:

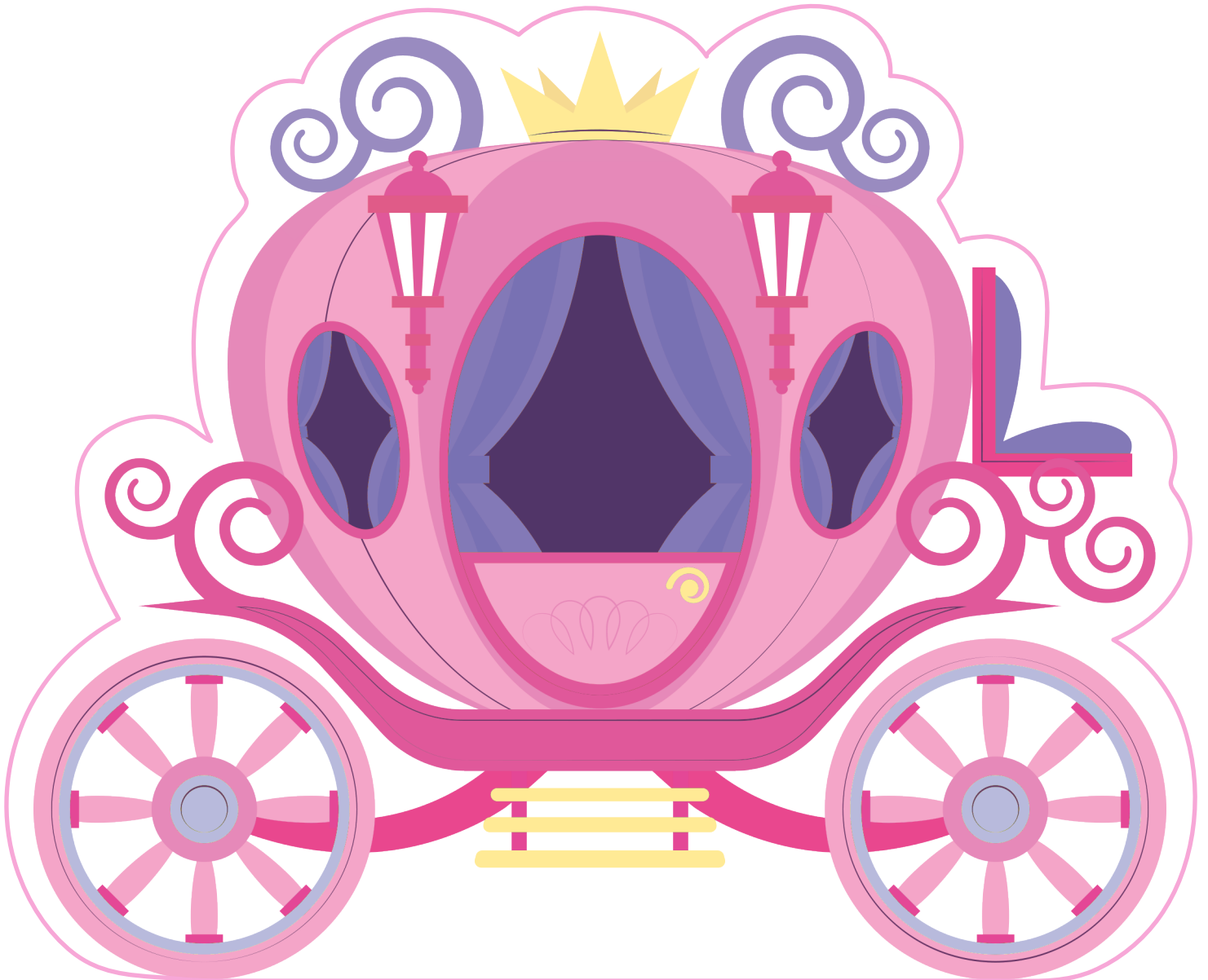
1. Glue this paper to a piece of thick card and wait to dry.
2. Cut around the shape and fold on the dotted lines.
3. Glue or use double-sided sticky tape to attach the tabs in place.



Please get a responsible adult to help you with this project.



Make up these props to help Sindy perform ballets based on The Nutcracker or Cinderella!



Please get a responsible adult to help you with this project.

