



## INSTRUCTIONS:

1. Glue this paper to a piece of thick card and wait to dry.
2. Cut around the shape and fold on the dotted lines.
3. Glue or use double-sided sticky tape to attach the tabs in place.

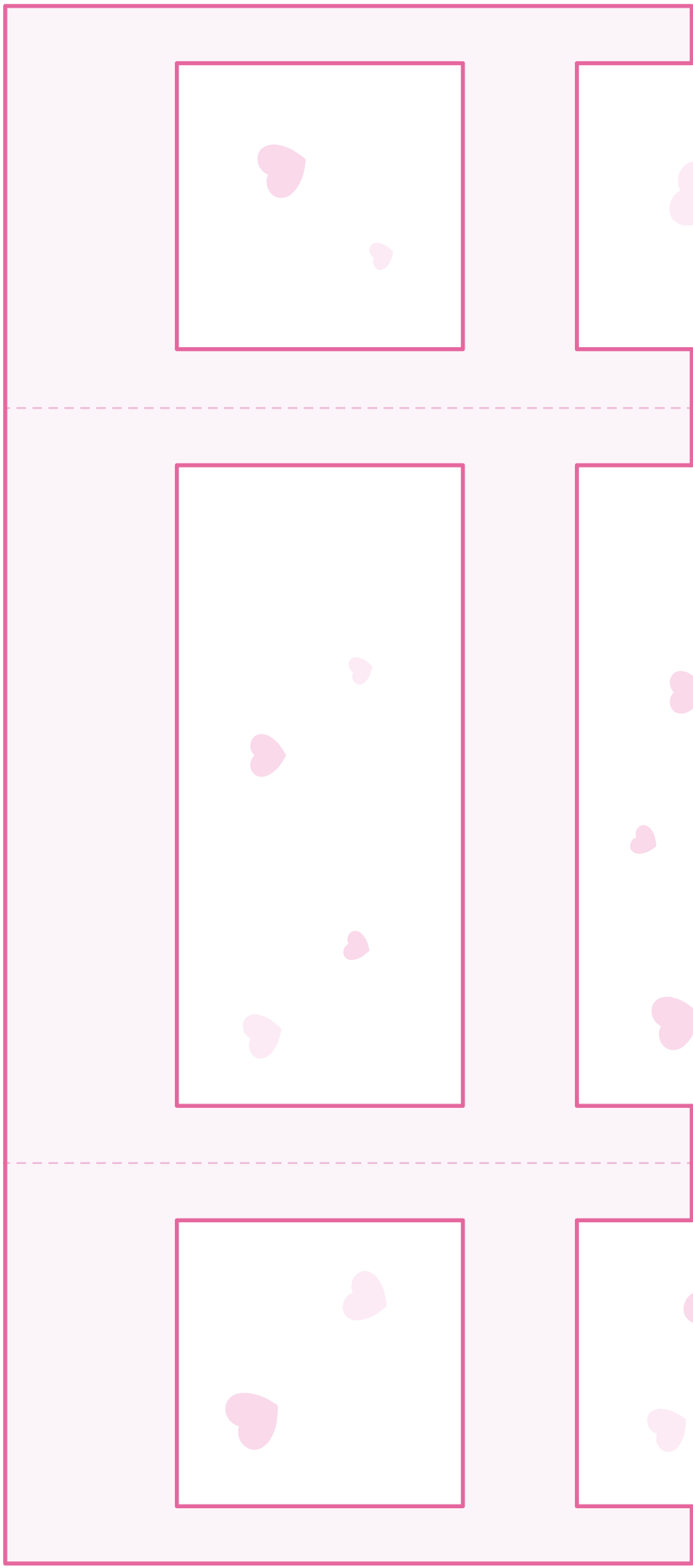


Please get a responsible adult to help you with this project.



INSTRUCTIONS:

4. Glue this paper to a piece of thick card and wait to dry.
5. Carefully cut around the table legs shape and fold outwards along the dotted lines.
6. Wrap the table legs around the back and sides of the dressing table top and glue the top section to the sides of the table top.



Please get a responsible adult to help you with this project.